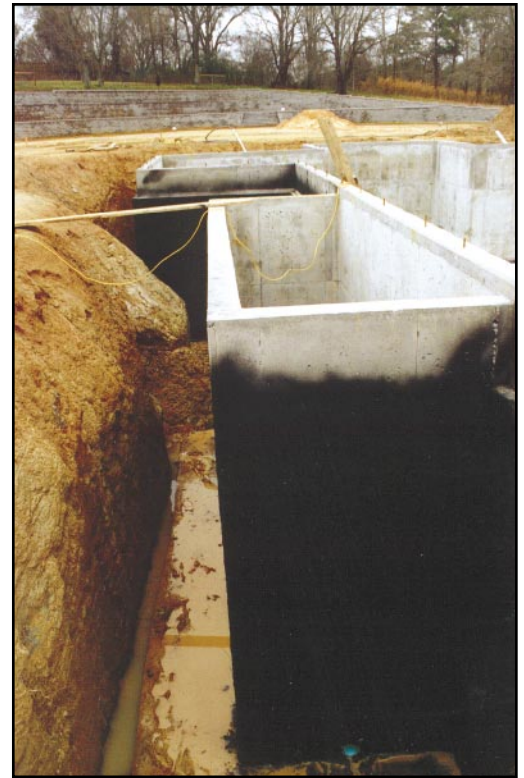


# ECOBASE II Waterproofing Membrane

*Protects Twice As Much As Other Membranes*



## Designed To Be A High Performance And Cost Effective Waterproofing Solution

- A very flexible membrane to handle movement and minor cracking.
- Instant build to ensure proper membrane thickness every time.
- Provides a completely seamless waterproofing membrane.
- Polymerized to provide resistance to chemical breakdown.
- Durability for long term water protection.

### COVERAGES

Walls - good water protection (40 mil) ..... 30 sq. ft./gal.  
 Walls - better water protection (55-60 mil) ..... 22 sq. ft./gal.

### TYPICAL UNCURED PROPERTIES

Specific Gravity (ASTM D 244) ..... 1.000  
 Viscosity (ASTM D 1200) ..... >25 centipoise  
 PH ..... 12.3  
 Flammability (ASTM D 3143) ..... 500°F  
 Color ..... Brown to black  
 Non-Toxic ..... No Solvents  
 Shelf Life ..... 6 months

### Packaging

Available in bulk & 275 gal. totes

### TYPICAL CURED PROPERTIES

Initial Cure ..... 10 minutes  
 Final Cure ..... 24-48 hours  
 Tensile strength ..... 17 psi  
 Elongation (ASTM D 412-75) ..... 1100%  
 Resilience ..... 85% (recovery)  
 Moisture Vapor Transmission ..... .01 gm/sq.ft./hr  
 Impermeability to Water (ASTM 96-72) ..... 32 psi  
 Bonding (ASTM C 836-76) ..... pull off force 34.1 psi  
 Resistance to Acids  
     Hydrochloric ..... 13%  
     Acetic ..... 30%  
     Sulfuric ..... 13%  
 Temperature Effect  
     Stable ..... 248°F  
     Flexible ..... 13°F

**EPRO SERVICES**  
 P.O. Box 347  
 Derby, KS 67037 USA



Phone: 800-882-1896  
 316-262-2513  
 Fax: 316-262-2529

# ECOBASE II Specifications

## 1. PRODUCT NAME

**ECOBASE II**

## 2. MANUFACTURER

EPRO SERVICES  
P O Box 347  
Derby, KS 67037  
PHONE 800-882-1896  
FAX 316-794-3451

## 3. PRODUCT DESCRIPTION

**Basic Use:** ECOBASE II is designed to be a basic waterproofing and vapor retardant barrier for vertical application to both below grade and above grade surfaces ECOBASE II is to be applied with the unique self contained ECO Sprayer to produce instantaneous, monolithic coating at accelerated rates It may be used as a base coat for other water-based products

**Composition:** ECOBASE II is a water-based, high solids, highly polymer-modified asphalt emulsion, which exhibits elastomeric qualities to handle minimal expansion and contraction movement and increase its durability

### Benefits:

- VOC compliant.
- Non hazardous, non-toxic, and non-flammable.
- Efficient and effective application.
- Cost effective.
- Non-leaching.
- Excellent water proofing.

### Limitations:

- Should be applied to clean and dry surfaces.
- Adjacent areas and surfaces should be protected from contact with the product.
- Exposure to UV.
- Should be applied above 40°F.
- A test area should always be done to verify compatibility of substrate with product
- Solvent-based products should not be applied over this product.

## 4. TECHNICAL DATA

**Properties: See chart**

**Coverages: See chart**

### • Specification Writer:

Contact EPRO Services before writing specifications on this project. Test information available upon request.

## 5. INSTALLATION

**Preparation:** Must include but not limited to:

- All surfaces should be dry and free of loose materials, release oils and other contaminants. These should be removed prior to application by power washing or other suitable methods.
- Repairs: Any cracks, spall or metal protrusion areas should be repaired by trowel application of ECOLINE-T insuring penetration of materials in damaged or cracked area. Large cracks may also require a layer of fiberglass mesh or polyester mat being spanned over crack and ECOLINE-T applied over this to provide additional membrane strength.
- A test should always be done prior to application using the same cleaning preparation and application procedures to be used on the project.

### Application:

- Should be applied in accordance with specific application specifications.
- ECOBASE II is to be spray applied with catalyst water by appropriate equipment fitted with specific nozzles (the ECO Spray System) which forms a monolithic water protection coating. Spray application produces an approximate 20 mil build on each pass of spray gun.

**Cleaning:** Clean all tools with kerosene and/or equivalent.

## 6. AVAILABILITY AND COST:

Contact the local distributor and/or Authorized Applicator for availability and cost.

## 7. WARRANTY

Limited Warranty: EPRO warrants this product to be free from defects. EPRO makes no other warranties with respect to this product, express or implied, including without limitation the implied warranties of MERCHANTABILITY OR FITNESS FOR PARTICULAR PURPOSE. EPRO's liability shall be limited in all events to supplying sufficient product to retreat the specific areas to which defective product has been applied. EPRO shall have no other liability, including liability for incidental or resultant damages, whether due to breach of warranty or negligence. This warranty may not be modified or extended by representatives of EPRO or its distributors.

## 8. MAINTENANCE:

No maintenance required.

## 9. TECHNICAL SERVICES AND INFORMATION:

Complete technical services and information are available from EPRO Services.



Rev. EBII.06.04.98

